



Park Hill, 1 Compton Park Road

Mannamead, Plymouth, PL3 5BU

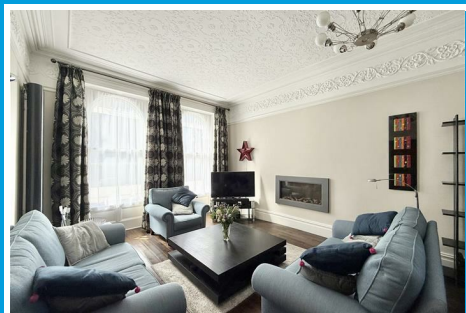
Guide Price £900,000



Park Hill, 1 Compton Park Road

Mannamead, Plymouth, PL3 5BU

Guide Price £900,000



**COMPTON PARK ROAD, MANNAMEAD,
PLYMOUTH, PL3 5BU**

GUIDE PRICE £900,000 - £950,000

SUMMARY

A rare opportunity to acquire this impressive individual detached Victorian Villa. The current owners have lived in the house for 27 years & are only the 3rd family to own the property since it was built in the early 1880s. Substantial double storey full width rear extension circa 1910. Extensively upgraded, improved & refurbished. Comfortably appointed welcoming home. Retaining the period style with a host of modern conveniences. Rehau uPVC double-glazed sash-style windows in line with the original design. Quality, upgraded central heating system with high capacity water supply. Contemporary radiators & gas fires. Portico & long covered veranda. Entrance lobby & 29ft long reception hall. Two 25ft long reception rooms, kitchen, useful utility room & boiler room. Spacious study & cloakroom/wc. Light & airy landing, 5 good-sized bedrooms, larger master bedroom & large en-suite bathroom. Well appointed, spacious family bathroom. The property stands on a relatively large wide level southerly-facing plot, enjoying a good degree of privacy with morning sun rising on the east side moving around across the southerly facing front & setting on the west side in the evening. Extensive well-kept lawned gardens, safely enclosed by wall & ideal for children to play in. Sitting areas ideal for Alfresco entertaining. Substantial & upgraded greenhouse. On the west side the drive provides parking & gives access to a large detached garage with remote controlled door.

LOCATION

Occupying an enviable position in the prime residential district of Mannamead. Overlooking the similarly aged Emmanuel Church & with an excellent range of local services & amenities found close by in Mannamead, Hartley, Compton & Mutley. The position is good with access into the city & nearby connection to major routes in other directions.

ACCOMMODATION

A wide portico covering the veranda, gives access via an entrance

porch to the spacious reception hall some 20ft long. A wide shallow tread staircase rises to the first floor. Beneath further stairs descend to the useful cellars that are ideal for storage. Two large reception rooms, a dining/sitting room & a sitting room with a side door into the garden. A study with side French door to the garden. Cloakroom/wc. A fitted integrated kitchen. A generous-sized useful utility room & from here into the boiler room with recently installed Atag boiler servicing the central heating & domestic hot water with pressurised heating control & Megaflow large capacity hot water tank.

At first floor level a high ceiling light & airy landing with high level Velux double-glazed window providing ample natural light gives access to 5 bedrooms. A spacious & impressive master bedroom with windows to the front & side & a generous-sized quality en-suite bathroom which can be accessed from the landing as desired, with large bath, separate shower, wc, wash hand basin & under-floor heating. 4 further bedrooms & a spacious family bathroom also well equipped with large bath, separate shower, wc, wash hand basin & under-floor heating.

The property stands on a relatively wide southerly-facing level plot enjoying a good degree of privacy set within its own walls with the sun rising on the east side & moving around across the front on the south side & setting on the west side in the evening. Extensive walled gardens for children to play safely in. Patios to sit to enjoy Alfresco entertaining. Substantial & upgraded greenhouse. On the westside excellent parking with a private drive giving access to a spacious garage with remote controlled front door & pedestrian door to the garden. An impressive home which really must be viewed in order to be fully appreciated.

GROUND FLOOR

PORTICO

45 estimate x 4'9 (13.72m estimate x 1.45m)

ENTRANCE LOBBY

5'7 x 4'3 (1.70m x 1.30m)

RECEPTION HALL

29 x 6'1 (8.84m x 1.85m)

Tel: 01752 664125

SITTING ROOM

26'3 x 13'3 (8.00m x 4.04m)

LOUNGE/DINING ROOM

26'6 x 13'6 (8.08m x 4.11m)

STUDY

16'6 x 13'5 (5.03m x 4.09m)

KITCHEN

12'7 x 11'5 (3.84m x 3.48m)

UTILITY ROOM

12'6 x 8'2 (3.81m x 2.49m)

BOILER ROOM

8'10 x 3'8 (2.69m x 1.12m)

FIRST FLOOR LANDING

MASTER BEDROOM

20 x 14'8 (6.10m x 4.47m)

EN-SUITE BATHROOM

12'11 x 11'9 (3.94m x 3.58m)

BEDROOM TWO

13'2 x 13 (4.01m x 3.96m)

BEDROOM THREE

13'7 x 12'6 (4.14m x 3.81m)

BEDROOM FOUR

13'6 x 11'3 (4.11m x 3.43m)

BEDROOM FIVE

11'3 x 10 (3.43m x 3.05m)

FAMILY BATHROOM

13 x 12'7 (3.96m x 3.84m)

EXTERNALLY

PRIVATE DRIVE

17'5 long x 15'5 wide (5.31m long x 4.70m wide)

GARAGE

20 x 15'3 wide (6.10m x 4.65m wide)

GREENHOUSE

14'3 x 9'3 (4.34m x 2.82m)

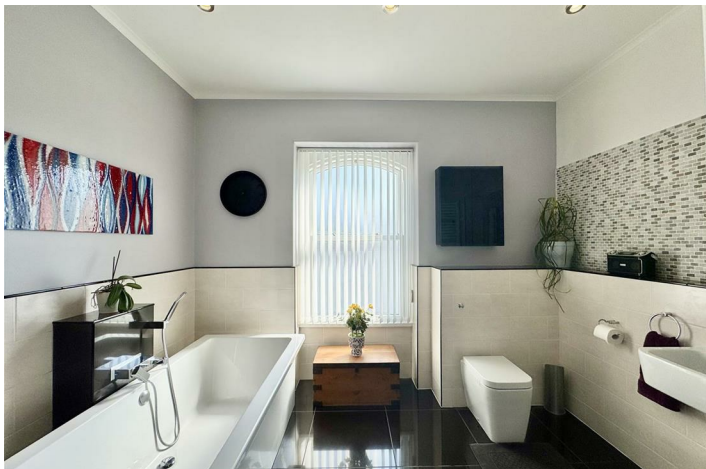
COUNCIL TAX

Plymouth City Council

Council Tax Band: G

SERVICES

The property is connected to all the mains services: gas, electricity, water and drainage.



Road Map



Hybrid Map



Terrain Map



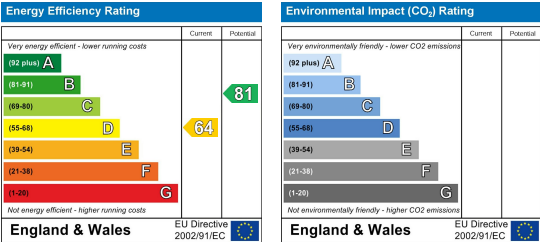
Floor Plan



Viewing

Please contact our Plymouth Office on 01752 664125 if you wish to arrange a viewing appointment for this property or require further information.

Energy Efficiency Graph



These particulars, whilst believed to be accurate are set out as a general outline only for guidance and do not constitute any part of an offer or contract. Intending purchasers should not rely on them as statements of representation of fact, but must satisfy themselves by inspection or otherwise as to their accuracy. No person in this firms employment has the authority to make or give any representation or warranty in respect of the property.